

Year 7 Information Evening

Challenge aspirations

Create opportunities for students to thrive

Open minds – through encouraging intellectual curiosity & independent thought

Mr Mitchell

Headteacher

Vision and values

Challenge aspirations

Create opportunities for students to thrive

Open minds – through encouraging intellectual curiosity & independent thought

- Ethos, values, intent
- Vision (longer term)
- Educational Landscape – MATT and future

Challenge aspirations

Create opportunities for students to thrive

Open minds – through encouraging intellectual curiosity & independent thought



Challenge aspirations

Create opportunities for students to thrive

Open minds – through encouraging intellectual curiosity & independent thought

The Future

- Academic Progress
- Facilities and Opportunities
- MATs

Challenge aspirations

Create opportunities for students to thrive

Open minds – through encouraging intellectual curiosity & independent thought

Mr Kerry

Deputy Headteacher
Quality of Education

Challenge aspirations

Create opportunities for students to thrive

Open minds – through encouraging intellectual curiosity & independent thought

Content

- Curriculum intent and implementation
- Target grades and assessment changes
- Reports and subject evenings
- How to help your children revise
- INSIGHT (journal) and other platforms

Curriculum intent and implementation

Our curriculum intent at Glebelands is to:

- Challenge Aspirations
- Create Opportunities for students to thrive
- Open Minds – through encouraging intellectual curiosity and independent thought

Challenge aspirations

Create opportunities for students to thrive

Open minds – through encouraging intellectual curiosity & independent thought

Target grades

- We set aspirational target grades using FFT 20 probabilities as a base and then increasing these
- Sometimes the system is not quite right for individual students (particularly in creative subjects)
- We now have a system to review these target grades which is currently being done for Year 10

Assessment

- We assess students regularly as a school
- Retrieval, Low stakes, Summative, Test Weeks/Mocks
- Performance in Summative assessments and Test Weeks/Mocks is a more valid indicator
- We are now only going to report on attainment in the Spring and Summer Term reports to parents. The Autumn report will be an engagement report (except Year 11)
- New report style

YEAR 9 Spring REPORT

Barry Smith ...ABC

Commendation Points: 100

Concern Points: 5

Attendance: 98.5%

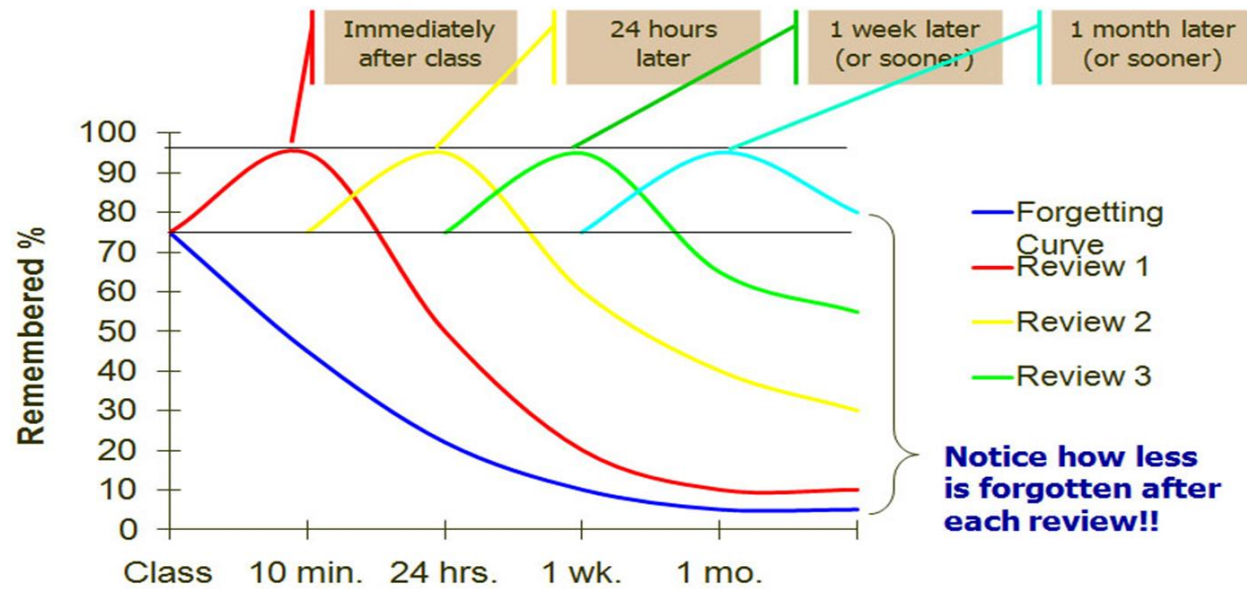
Subject	Target Grade	Year 9 Spring Grade	Year 9 Autumn Grade	Year 8 Summer Grade	Year 8 Spring Grade	Year 7 Summer Grade	Homework Spring	Behaviour Spring	Engagement in Learning Spring
English	5	5-	5-	5-	5-	5-	Requires improvement	Cause for Concern	Good
Mathematics	5	5+	5	5	5	5	Good	Good	Good
Science	5	5+	5	5	5	5	Good	Good	Good
Art	5	5+	5+	5+	5+	5+	Excellent	Excellent	Excellent
Computing	5	5	5-	5-	5-	5-	Good	Requires improvement	Requires improvement
Design Technology	5	6-	6-	6-	6-	6-	Excellent	Excellent	Excellent
French/Spanish	5	4+	4+	4+	4+	4+	Requires improvement	Requires improvement	Requires improvement
Geography	5	5	5	5	5	5	Good	Good	Good
History	5	5+	5+	5+	5+	5+	Good	Good	Good
Learning for Life	N	N	N	N	N	N	Excellent	Excellent	Good
Performing Art	5	5-	5	5	5	5	Good	Good	Requires improvement
Physical Education	5	4	4	4	4	4	N	Requires improvement	Cause for Concern
Religious Education	5	5+	5	5	5	5	Good	Good	Good

Challenge aspirations

Create opportunities for students to thrive

Open minds – through encouraging intellectual curiosity & independent thought

Overcoming the Curve



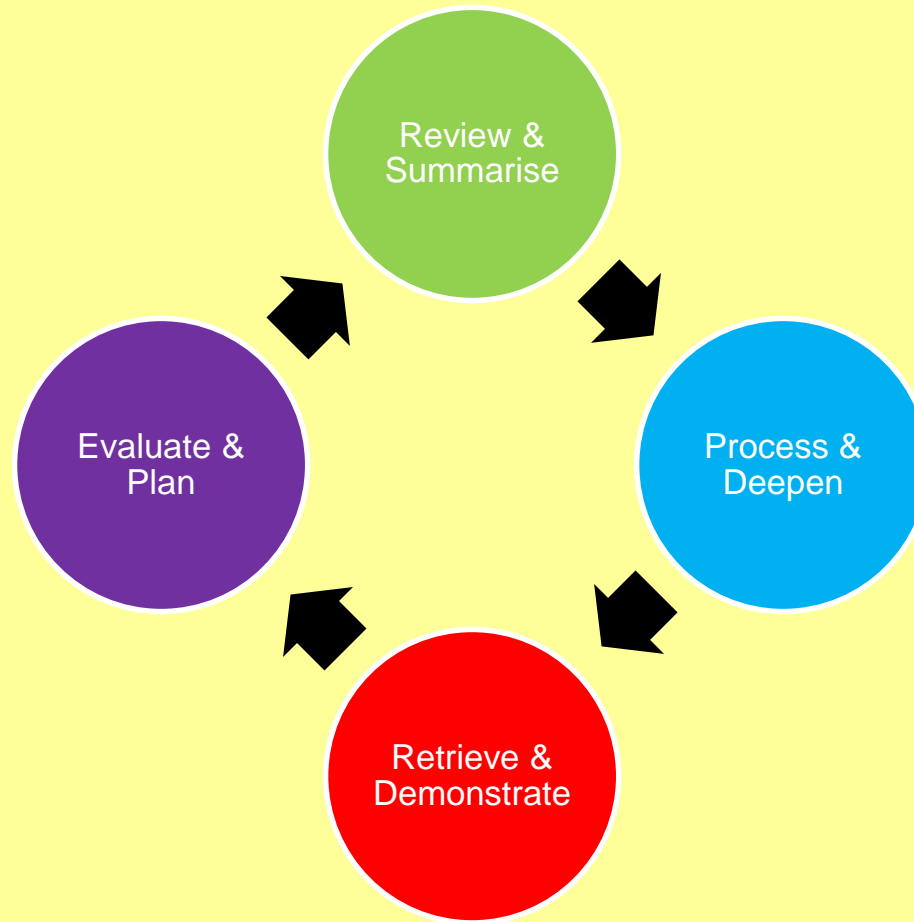
If we are clever about how we revise we can overcome the forgetting curve

Challenge aspirations

Create opportunities for students to thrive

Open minds – through encouraging intellectual curiosity & independent thought

What does effective revision look like



Challenge aspirations

Create opportunities for students to thrive

Open minds – through encouraging intellectual curiosity & independent thought

Testing is key

Which of these study patterns is more likely to result in long-term learning?

1. study study study study – test
2. study study study test – test
3. study study test test – test
4. study test test test – test

Challenge aspirations

Create opportunities for students to thrive

Open minds – through encouraging intellectual curiosity & independent thought

INSIGHT

- Homework
- Commendations
- Behaviour concerns
- Detentions

Challenge aspirations

Create opportunities for students to thrive

Open minds – through encouraging intellectual curiosity & independent thought

Mr Smitheram

Deputy Headteacher
Personal Development

Challenge aspirations

Create opportunities for students to thrive

Open minds – through encouraging intellectual curiosity & independent thought

What else happens at Glebelands?

- Pastoral v academic
- Safeguarding – Mr Mitchell, Mrs Hearn, Mrs Lee
- SEN
- Winning the small battles
 - Carrots
 - Cards and systems
 - Homework
 - Warning System & Inclusion
- Personal Development
 - Enrichment and opportunities
 - L4L and RSE
 - Careers and Innervate
 - Inclusivity, Diversity and Equality

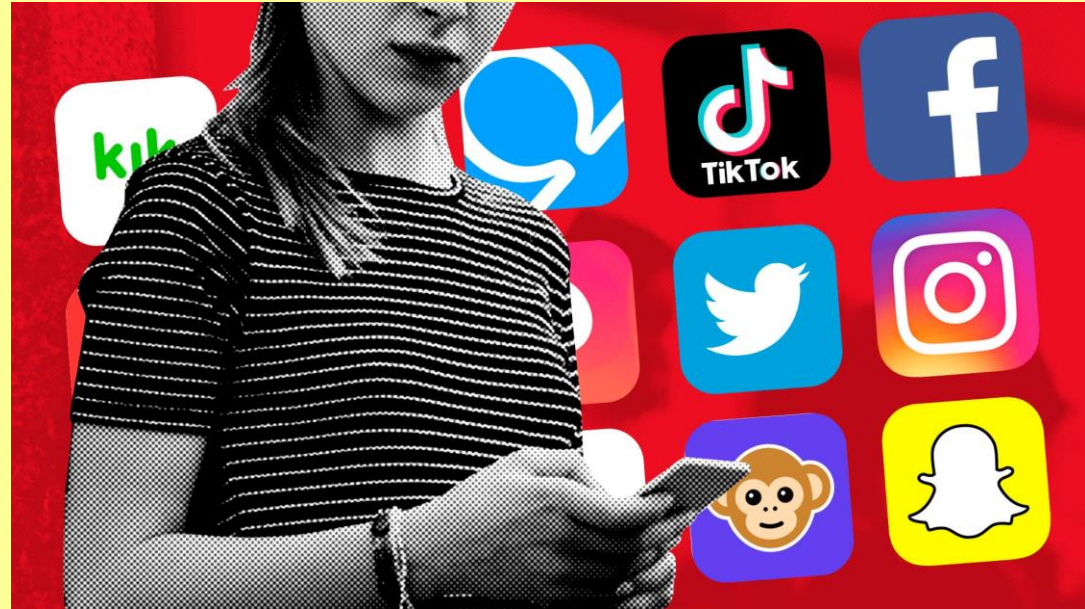
Challenge aspirations

Create opportunities for students to thrive

Open minds – through encouraging intellectual curiosity & independent thought

Our 2022 society...

- Phones, phones, phones
- TikTok and SnapChat
- Xbox
- Netflix
- Trackers
- Where are they?
- County Lines
- Vaping
- Knife Crime
- COVID
- Mental Health
- Sexuality



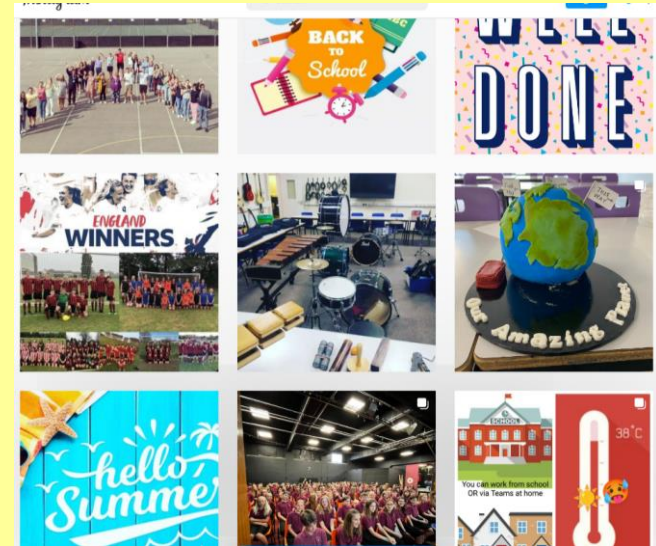
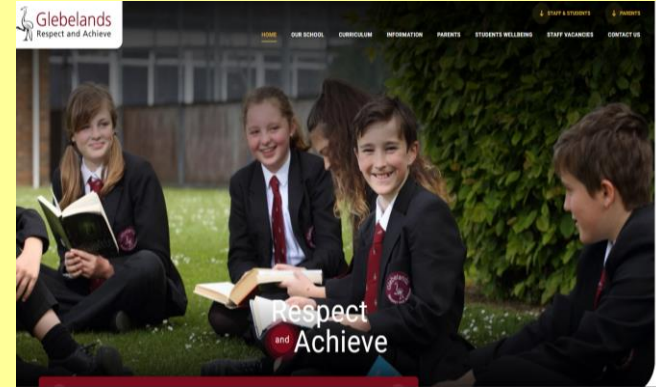
Challenge aspirations

Create opportunities for students to thrive

Open minds – through encouraging intellectual curiosity & independent thought

Communication

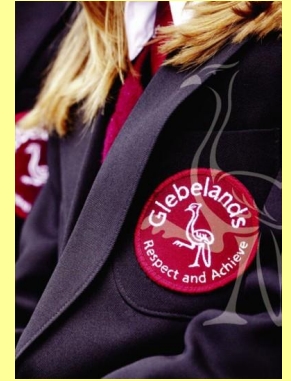
- **From us:**
 - Website
 - Termly Newsletters
 - Parent Mail
 - Attendance Texts
 - Subject Evenings
 - Emails from staff via @info
 - Website
 - Social Media* (Insta,FB,Twr)
- **To us:**
 - Pastoral
 - Tutor
 - HOA
 - SLT link (Mrs MacAulay)
 - Head
 - Academic
 - Teacher
 - HOD
 - SLT Link
 - Head
 - Via info@
 - Phone call
 - School Gate*
 - Reception*



Challenge aspirations

Create opportunities for students to thrive

Open minds – through encouraging intellectual curiosity & independent thought



Ms Auty

Head of Achievement Year 7

Challenge aspirations

Create opportunities for students to thrive

Open minds – through encouraging intellectual curiosity & independent thought

Uniform

- Students have returned to school looking so smart.
- Lost and found items go to student services.
- Please name uniform / PE kit / bags / shoes and water bottles.
- If your child has missing uniform items please pop a note into the journal so they can come to see me and get a yellow uniform card.
- Respect cards are in blazer pockets. Take them out before you wash them!
- There are 7 pockets in the blazer!



Challenge aspirations

Create opportunities for students to thrive

Open minds – through encouraging intellectual curiosity & independent thought

Mobile phones

If phones are heard/seen once in the school gate:

- 1st time – taken by staff and student collects at end of day, after school detention given.
- 2nd time and beyond – taken, parents contacted to collect at earliest convenience, with after school detention given.

– **Social Media**

Monitor interactions as best you can.

Be aware of what chat apps they are using. Snapchat/
Whats App/ Instagram.

Punctuality



Every school day counts
but every **minute** is equally important!

Did you know?

Being 15 minutes late each day is the same as missing two weeks of school!*

*Over one full academic year

- Routines
- Homework done and bags packed by 8pm.
- Phone off and if need be removed from child at agreed time!
- Bedtime wind down. Book time.
- Bedtime and alarm set.
- We do check for bus issues and roadworks of course.

Challenge aspirations

Create opportunities for students to thrive

Open minds – through encouraging intellectual curiosity & independent thought

Attendance

Above 97%	Less than 6 days absence a year: Excellent attendance! Students with this attendance will be in a great position to achieve their best.
95%	Less than 10 days absence in a year: Students with this attendance are likely to achieve their target grades at GCSE.
90%	19 days absence over the year: Students with this attendance are missing a month of school per year and may fall behind in Maths and Literacy; it will be difficult for them to achieve their best. A child averaging 90% attendance from Year 7 will have missed 3 months of school by the end of Year 9. We may refer to the Inclusion Officer or our pastoral support worker.
85%	29 days absence in a year: These students are missing 6 weeks of school a year, it will be very difficult for them to keep up and achieve their best. We will refer to the Inclusion Officer to support attendance.
80% or less	Students with this attendance are missing a day for every week of school. It will be almost impossible to keep up with work. We will refer to the Inclusion Officer to support attendance.

Challenge aspirations

Create opportunities for students to thrive

Open minds – through encouraging intellectual curiosity & independent thought

How can you help your child?

- Genuine illness is unavoidable of course.
- If it is minor send them in to school after some household medication.
- If your child is prone to headaches arrange with your HOA to have medication at Student Services.
- We do not have a 48 hour policy for illness.
- Tell school if you need some support or have some worries.

Who do you contact?

- Absence line for attendance matters.
- Main Glebelands telephone number for messages, general enquiries or finance enquiries.
- Tutors in the first instance for issues pertaining to your child.
- Main Glebelands telephone number for messages and enquiries about Learning Support.
- Info account via website if you are not too sure. A member of staff will re direct your email as best they can.
- Our new website has lots of information for you.

How can we help you?

- Homework club is after school every day till 4:30pm. Staff are there to help and advise.
- We have a small stock of Chromebooks if your child does not have a computer at home to help with homework please get in touch if you would like some help.



Challenge aspirations

Create opportunities for students to thrive

Open minds – through encouraging intellectual curiosity & independent thought

Concerns if you think your child is being bullied

- If you have any concerns regarding your child's wellbeing please do get in touch
- All incidents will be investigated
- Isolated incidents will be dealt with and sanctioned accordingly
- Repeated incidents will be treated as bullying and will be dealt with in line with our bullying policy

Detentions

- The vast majority of children will not receive detentions
- Concerns will appear on Insight
- You will be given 24 hour's notice for after school detentions
- Homework detentions finish at 4.15pm
- Behaviour detentions finish at 4pm or 4.15pm

The year ahead - Autumn

- Sept 12th School photos – proofs returned in a few weeks
- Sept 19th School closed – Bank holiday for the state funeral
- Sept 21st Thrive begins
- Sept 22nd Open Evening helpers!
- Oct 21st Half Term begins
- Nov 18th Mufti Day and Reports issued
- Nov 25th INSET day
- Dec 16th End of term

Challenge aspirations

Create opportunities for students to thrive

Open minds – through encouraging intellectual curiosity & independent thought

Term Dates

- **Half Term:** 24th Oct 2022 - 28th Oct 2022
- **Inset Day:** 25th November 2022
- **Winter holidays:** 19th Dec 2022 - 30th Dec 2022

- **First day of term:** 3rd Jan 2023
- **Half Term:** 13th Feb 2023 - 17th Feb 2023
- **Easter/Spring holidays:** 3rd Apr 2023 - 14th Apr 2023

- **First day of term:** 18th Apr 2023
- **May day:** 1st of May 2023
- **Half Term:** 29th May 2023 - 2nd Jun 2023
- **Last day of term:** 21st Jul 2023